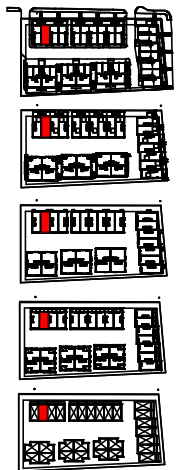


258 SQ.FT.
GARAGE / LOWER
LEVEL



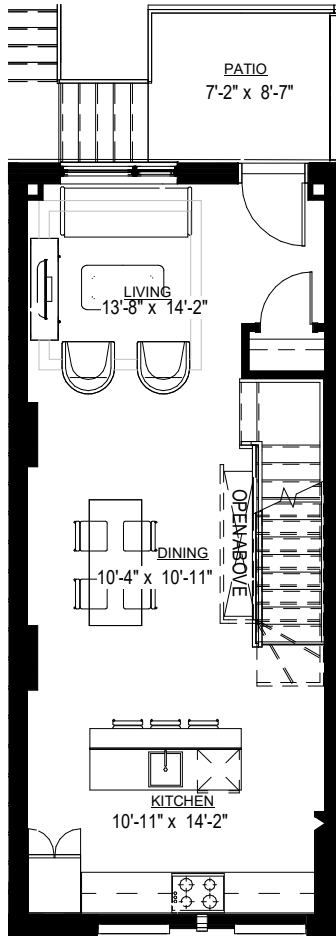
GARAGE /
LOWER LEVEL

1ST LEVEL

2ND LEVEL

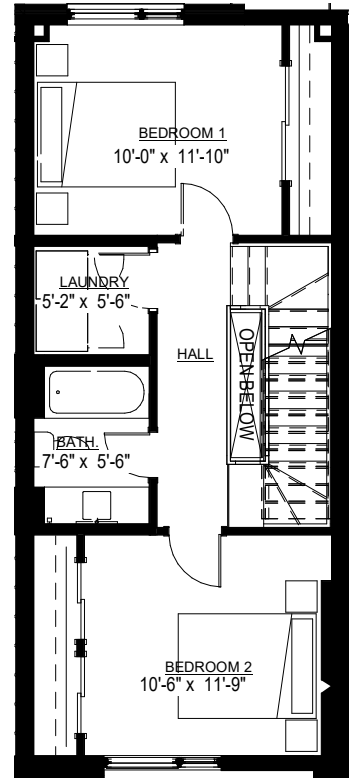
3RD LEVEL

ROOF LEVEL

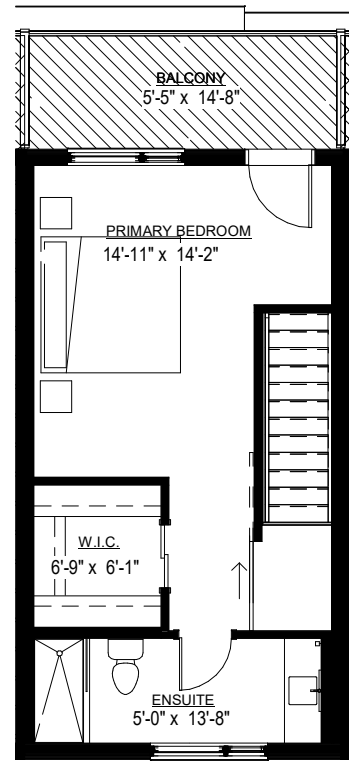


557 SQ.FT.
1ST LEVEL

UNIT 1B
318 CLIFTON ROAD
TOTAL 1st, 2nd & 3rd
1,795 sq. ft.
Including Lower Level



541 SQ.FT.
2ND LEVEL



439 SQ.FT.
3RD LEVEL



Hobin Architecture Incorporated

63 Pamilla Street T: 613-238-7200

Ottawa, ON K1S 3K7 F: 613-235-2005

hobinarc.com E: mail@hobinarc.com